

SURTEES

Railway Supplies

Renowned as a most reliable manufacturer, supplier and stockist of a diverse range of railroad equipment as well as high quality components and parts for all types of locomotives, rail wagons and rolling stock maintenance machines.



Company Profile

Surtees Railway Supplies (Pty) Ltd (S.R.S.), first called Surtees & Son (Pty) Ltd., was established in 1950 by Arthur Surtees, who prior to the aforementioned, had been a Director of Reunert and Lenz, a company based in Benoni R.S.A. at the time, who was the locally appointed agent for North British Ltd., a steam locomotive manufacturing company based in the United Kingdom. In the same year Arthur was joined in the business by his son Colin.

S.R.S. operated initially out of an office based in Denver R.S.A, and started out by manufacturing, stocking and supplying steam locomotive and hopper equipment and parts for the industrial rail road industry in Southern Africa.

As a result of the introduction into Southern Africa of diesel hydraulic and diesel electric locomotives in the early 1960's, S.R.S. also began to import, manufacture and stock equipment and parts for these locomotives.

In 1975 S.R.S. relocated to our present office, warehouse and workshop complex which is based in Heriotdale, R.S.A

In the 1980's, steam locomotives were slowly being phased out and S.R.S. therefore began to concentrate its efforts on the supply of equipment and parts for diesel and electric locomotives and also for hoppers and wagons.

In 1990 S.R.S. substantially increased its warehouse space and also added a second workshop which allowed the company to offer specialized reconditioning and repair facilities for all types of rolling stock equipment.

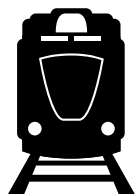
In 1997 S.R.S. extended its reconditioning facility to include diesel locomotives and was appointed the agent for Trackmobile (bi-modal rail shunting machines) in Southern Africa.

S.R.S. continues to be highly regarded as a most dependable "One Stop" source for "off the shelf" components and parts for all types of locomotives and rail wagons as well as for rolling stock maintenance equipment.

Exclusive agents for PENN machine driving gears and pinions a Transnet Freight Rail approved product.

Today the Surtees Rail Group of Companies consists of:

- Surtees Railway Supplies (Pty) Ltd.
- Surtees Engineering (Pty) Ltd.
- African Rail & Traction Services (Pty) Ltd.



SURTEES
Railway Supplies

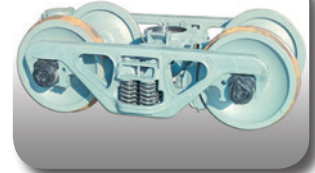
Rail Wagon and Hopper Components



Automatic Coupler & Draftgear



Vacuum & Handbrake Components



Cast Steel Bogie Assembly



Automatic Brake Slack Adjusters



Air Brake Cylinders & Parts

Locomotive and Wagon Components



Signal Lamps & Locomotive Lights



Air Horns / Whistles



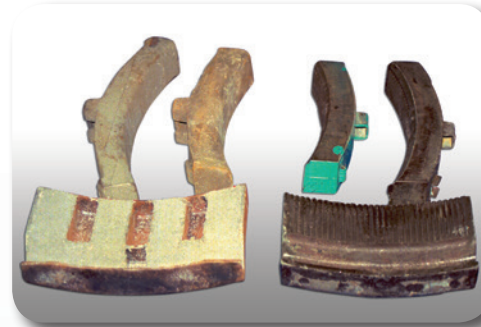
Windscreen Wiper Components



Coupling Hoses & Cocks



Brake Valve Repair Kits



Wheel Truing Brake Shoe



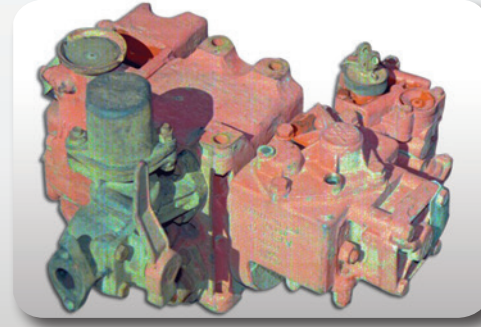
Automatic Couplers for Locomotives



Compressor Spares



Automatic Couplers & Draftgears
for Locomotives



Air Brake Valve for Overhaul or
Service Exchange



The following is a partial representation of components we supply and stock:

- › Automatic Couplers and Draftgear Assemblies
- › Air and Vacuum Brake Equipment and Parts
- › Cast Steel Bogies and Parts
- › Wheel and Axle Assemblies and Gibson Rings
- › Spherical and Tapered Roller Bearings and Adaptors
- › Bearing Brasses (White Metalled), Slippers and Axle Boxes
- › Brake Gear Parts and Mechanical Hand Brake Equipment
- › Brake Blocks (Cast Iron, Composition and Aluminum)
- › Rail Tracks and Equipment
- › Steam Locomotive Equipment, Parts and Boiler Tubes
- › Diesel Electric/Hydraulic Locomotive Equipment and Parts
- › Compressors, Expressors and Vacuum Pumps as well as Parts
- › Sanding Equipment, Air Conditioners, Heaters and Hotplates
- › Windscreen Wiper Motors, Pantograph Arms, Blades and Parts
- › Air Horns, Whistles, Bells, Throttle Actuators and Parts
- › Rolled Steel Tyres (Single and Double Flange and Flangeless)
- › Wheels (Cast Steel and Rolled Steel)
- › Forged Steel Axles, Bull Gears and Pinions
- › Jacks – (Hydraulic, Air and Mechanical) & Rerailing equipment
- › Gauges – (Air, Vacuum and Steam)
- › Signal Lamps and Lighting for Locomotives
- › Trackmobile Rail/Road Shunters
- › Whiting Portable Electric Screw Jacks
- › Automatic Brake Slack Adjusters



Trackmobile



Whiting Portable Electric Screw Jacks

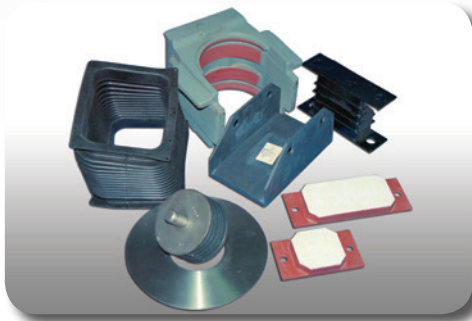
Diesel Locomotive Components



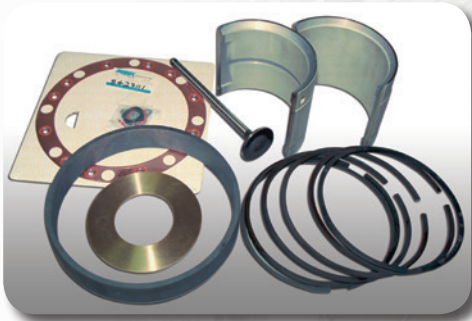
Fuel Injectors



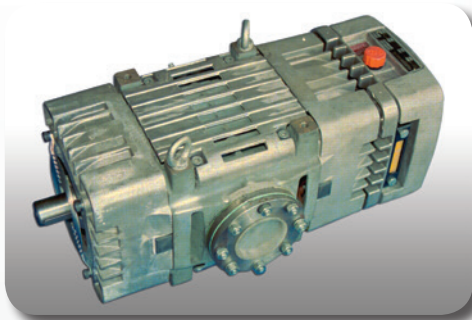
Filter Elements



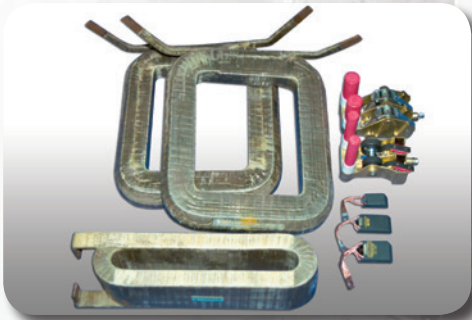
Bogie Components



Diesel Engine Components



Rotary Vacuum Pumps



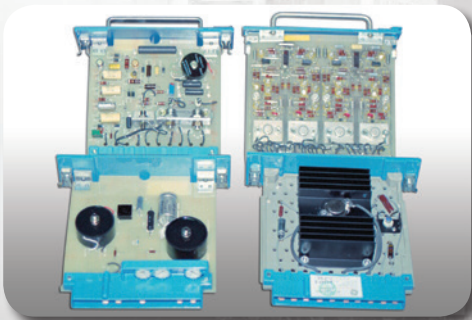
Motor Coils & Brush Holders



Axle Gears & Pinions



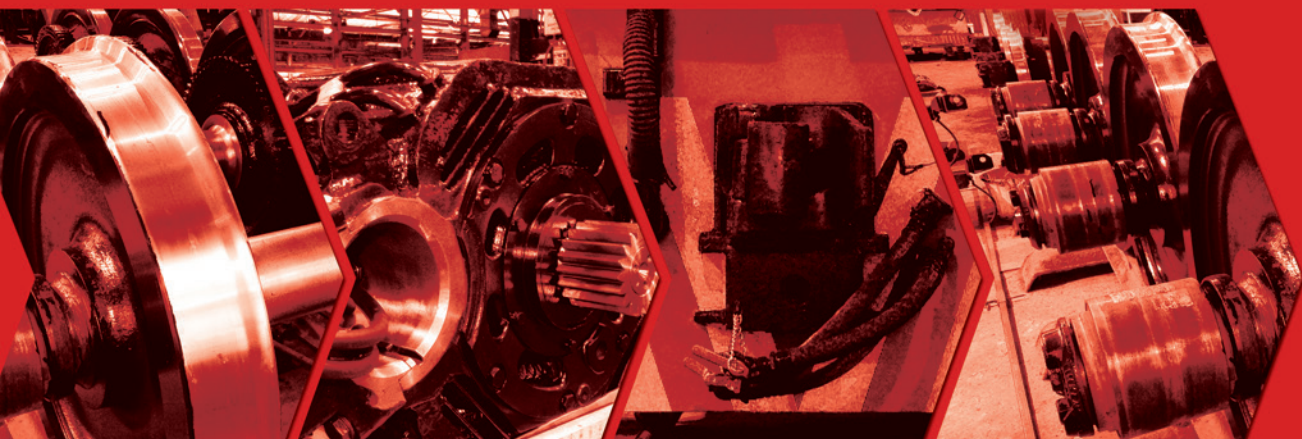
Traction Motor Support Bearings,
Oil Wicks & Covers



P.C. Boards



Cylinder Head &
Liner Assemblies





Associate Companies



Surtees Engineering (Pty) Ltd

The company concentrates its efforts on the manufacturing, repair and machining of specialised mining, steel production and railway related products.

The company also has specialised reconditioning facilities for equipment such as vacuum pumps, compressors, air, hydraulic and mechanical jacks, air and vacuum brake equipment, automatic slack adjusters, automatic couplers, drawgear assemblies, crane and rail bogies and other locomotive and rail wagon equipment.

Surtees Engineering offers manufacturing, which follows an approved ISO certified quality assurance programme as well as technical service and support.



www.railengineering.co.za



African Rail and Traction Services (Pty) Ltd

Sales, purchases and rentals of locomotives, trackmobiles and other rolling stock.

Repair/reconditioning of locomotives, trackmobiles and other rolling stock at our Pretoria West based workshop and on site.

A full range of spare parts for locomotives and rail wagons, most of which are available off the shelf. Sales and rentals of electrical, mechanical and air jacking systems for the lifting of locomotives and rail wagons, etc. on site.

Operation and control of entire rail systems ranging from the maintenance of customers own locomotives and rolling stock to the control and transport of their products and the maintenance of their railway tracks and switching/signaling systems.



www.africanrail.co.za

80 Whitworth Road, Heriotdale, Gauteng
PO Box 40178, Cleveland, 2022, RSA
Tel: +27 (0)11 626 1242
Fax: +27 (0)11 626 1128
E-mail: sales@surtees.co.za



www.railwaysupplies.co.za



Workshop – 1 Frikkie Meyer Road, Pretoria West
Tel: +27 (0)12 386 0150
Fax: +27 (0)12 380 0556
E-mail: sales@surtees.co.za

Head Office – 93 Whitworth Road, Heriotdale
PO Box 40178, Cleveland, 2022, RSA
Tel: +27 (0)11 626 3516
Fax: +27 (0)11 626 1171
E-mail: sales@surtees.co.za
Web: www.surtees.co.za